

# KZ-WM240U MULTIFUNCTIONAL WIRELESS MICROPHONE

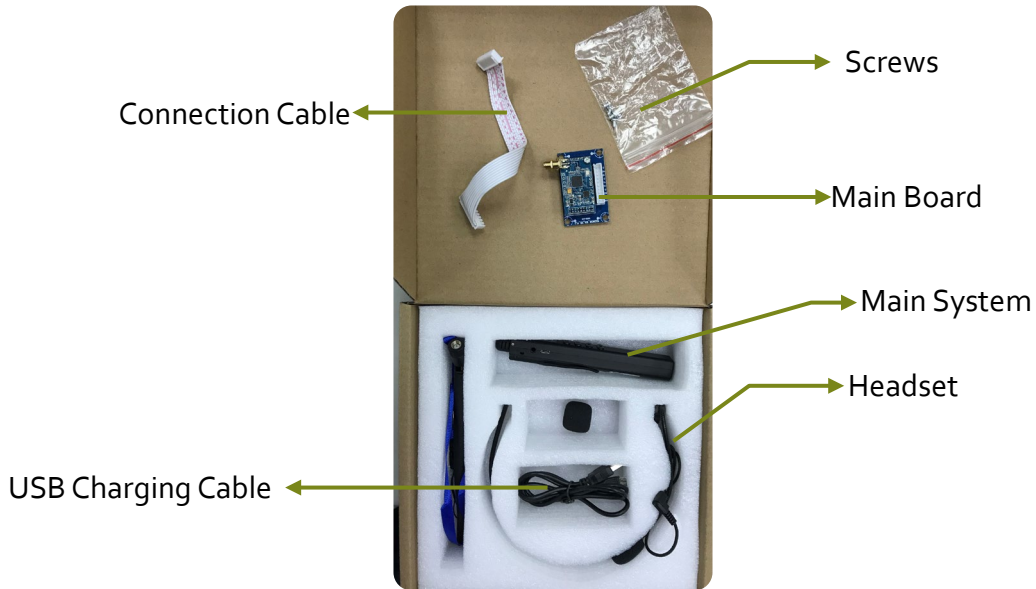
---

Installation Guide



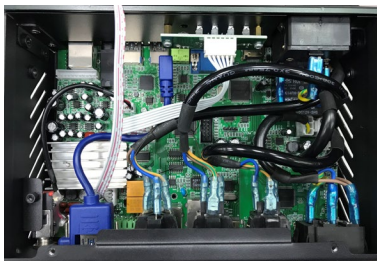
# KZ-WM240U Installation Guide

## 1 Package

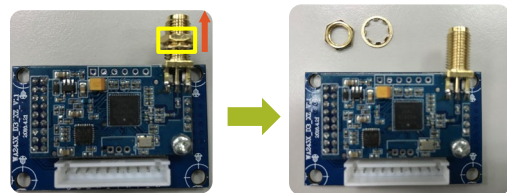


## 2 Installation

A. Remove the cover of KZ-VRC



B. Remove the Screw cap of the main board

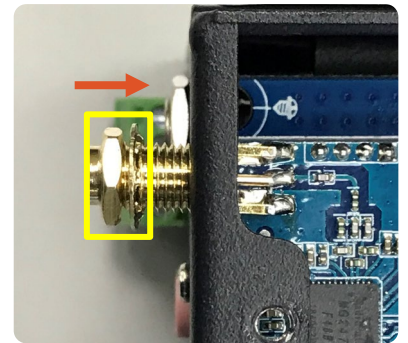
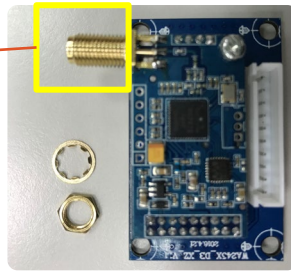
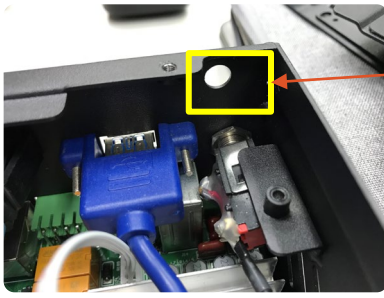


C. Connect the main board to the port of KZ-VRC with the connection cable.



\*Please note that you should press the connector harder to make sure the connection is firm.

#### D. Assemble the Receiver and the Antenna



Screw back and fix onto the main system

